



**Fast.
Accurate.
Reliable.**

SePRO Lab
Water Diagnostics for Lakes & Ponds



SeSCRIPT Analysis Report: Albemarle Parks

Company: SOLitude Lake Management

Project Name: Albemarle Parks

Address: 1320 Brookwood Dr. Ste. H, Little Rock, AR. 72202

Surface Area: NA

Contact Person: Hunter Poland

Average depth: NA

Phone: (571)-292-6906

Date Algae Sample Received: 7/30/2024

Email: hpoland@solitudelake.com

SeSCRIPT Analysis Performed: Algae ID

Algae ID Results

Albemarle Parks

Identification	Classification	Description	Density/Biomass (cells/mL)
Chris Greene Upper			
<i>Dictyosphaerium</i> sp.	Chlorophyta-Green algae	Colonial, planktonic	5,200
<i>Fragilaria</i> sp.	Bacillariophyta-Diatoms	Colonial, planktonic	1,200

Other algae observed at densities less than 40 cells/mL: *Nitzschia* (Bacillariophyta); *Pandorina* (Chlorophyta); *Aphanocapsa* (Cyanophyta); *Trachelomonas* (Euglenophyta)

Some particulate matter observed

Identification	Classification	Description	Density/Biomass (cells/mL)
Chris Greene Lower			
<i>Dictyosphaerium</i> sp.	Chlorophyta-Green algae	Colonial, planktonic	2,100
<i>Fragilaria</i> sp.	Bacillariophyta-Diatoms	Colonial, planktonic	210

Other algae observed at densities less than 40 cells/mL: *Trachelomonas* (Euglenophyta)

Some particulate matter observed

Algae ID Results

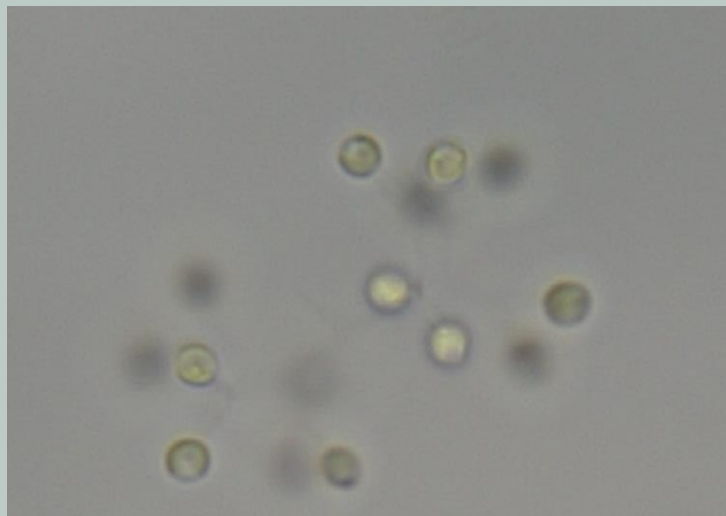
Albemarle Parks

Identification	Classification	Description	Density/Biomass (cells/mL)
Mint Springs Upper			
<i>Fragilaria</i> sp.	Bacillariophyta-Diatoms	Colonial, planktonic	740
<i>Mallomonas</i> sp.	Synurophyceae	Single-celled, planktonic, taste/ odor producer, flagellated	220

Other algae observed at densities less than 40 cells/mL: *Dolichospermum* (Cyanophyta); *Gymnodinium* (Dinophyta); *Trachelomonas* (Euglenophyta)
Some bacteria observed

Identification	Classification	Description	Density/Biomass (cells/mL)
Mint Springs Lower			
<i>Fragilaria</i> sp.	Bacillariophyta-Diatoms	Colonial, planktonic	590

Other algae observed at densities less than 40 cells/mL: *Rhopalodia* (Bacillariophyta); *Dolichospermum* (Cyanophyta); *Trachelomonas* (Euglenophyta)
Some bacteria observed



Algae ID Results

Albemarle Parks

Identification	Classification	Description	Density/Biomass (cells/mL)
Walnut Creek Lake			
<i>Trachelomonas</i> sp.	Euglenophyta- Euglenoids	Single-celled, flagellated, planktonic	< 40

Some particulate matter observed

Identification	Classification	Description	Density/Biomass (cells/mL)
Walnut Creek Beach			
<i>Trachelomonas</i> sp.	Euglenophyta- Euglenoids	Single-celled, flagellated, planktonic	< 40
<i>Gymnodinium</i> sp.	Dinophyta- Dinoflagellates	Single-celled, flagellated, planktonic	< 40

Some particulate matter observed

